

2 BEDROOM PREMIUM + STUDY

TYPE B4

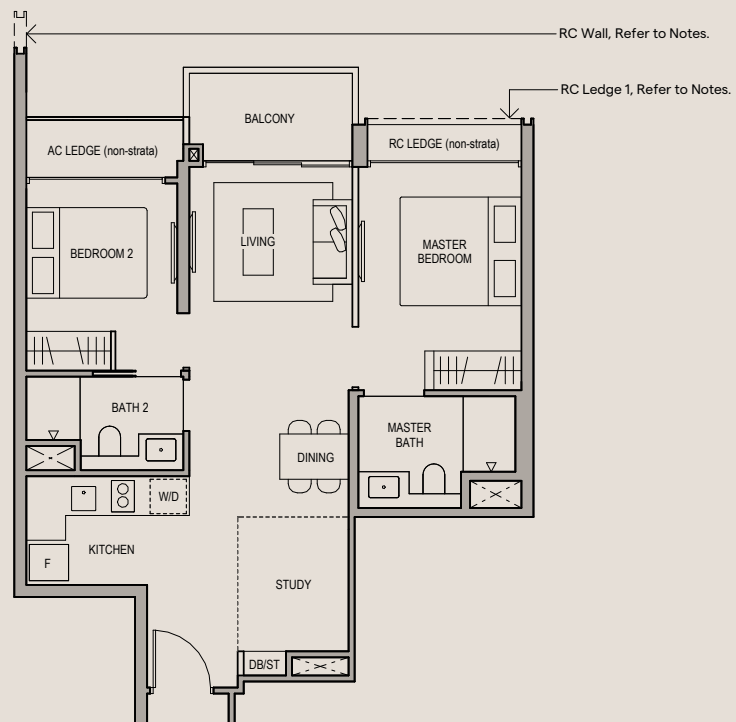
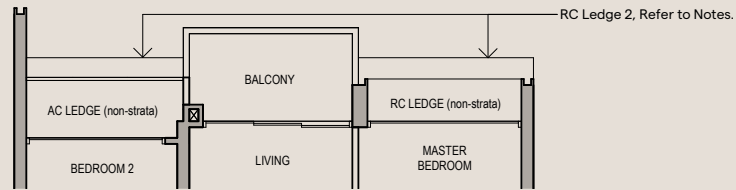
64 SQM (689 SQFT)

BLOCK 61

#03-06 TO #22-06,
#03-07* TO #22-07*

BLOCK 65

#03-18 TO #20-18,
#03-19* TO #20-19*



LEGEND

F FRIDGE W/D WASHER CUM DRYER AC AIR-CONDITIONER RC REINFORCE CONCRETE
HS HOUSEHOLD SHELTER DB DISTRIBUTION BOARD ST STORE

RC LEDGE 1 APPLICABLE TO:

#03-06, #03-07*, #03-18, #03-19*, #05-06, #05-07*, #05-18, #05-19*, #07-06, #07-07*, #07-18, #07-19*, #09-06, #09-07*, #09-18, #09-19*, #11-06, #11-07*, #11-18, #11-19*, #13-06, #13-07*, #13-18, #13-19*, #15-06, #15-07*, #15-18, #15-19*, #17-06, #17-07*, #17-18, #17-19*, #19-06, #19-07*, #19-18, #19-19*, #21-06, #21-07*

RC LEDGE 2 APPLICABLE TO:

#03-06, #03-07*, #03-18, #03-19*

RC WALL APPLICABLE TO:

#03-07* TO #22-07*, #03-18 TO #20-18

*DENOTES MIRRORED UNITS

0 0.5 1 2 3 5M

SCALE

DISCLAIMER : Area includes balcony where applicable, and excludes among others, the Air-Conditioner (AC) ledge, airwell, Reinforced Concrete (RC) Ledge and Services Voids. Please refer to the key plan for orientation. All floor plans are approximate measurements only and are subject to government re-survey. Balconies are not to be enclosed except with a balcony screen which has been approved and complies with the Competent Authority's guidelines. The cost of screen and installation shall be borne by the purchaser. For an illustration of the approved balcony screen, please refer to Annex A of this brochure.

